

HOW FAST FORWARD HELPS STRUGGLING READERS IN MISSISSIPPI TO SUCCEED

BRAIN FUTURES

JODY WOODRUM, PH.D.

MARTHA BURNS, PH.D.

SEPTEMBER, 2017

SCIENTIFIC LEARNING OVERVIEW

Founded

By world-renowned, award-winning neuroscientists

Overview

Scientific Learning provides educational software to K-12 schools and educational institutions around the world to accelerate learning by applying proven research on how the brain learns.

Outcomes

Fastest, most enduring outcomes backed by over [250 research studies](#)
Improved test scores and reduced costs for intervention backed by over [30 case studies](#)

Technology

SaaS solution provides scalability and simplifies sale with subscription fee pricing model

Students

Serving over 2.6 million students in 55 countries around the globe

Patents

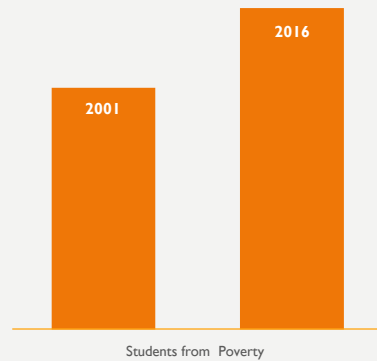
Over 40+ issued patents focused on adaptive learning, reading, literacy, comprehension, and related brain processing activities.

Mission

Scientific Learning Corporation combines advanced knowledge of how the brain learns and innovative technologies to improve English Language, reading, and other skills critical to academic success and learning. Our evidenced based programs produce fast and enduring gains essential to learner success.

WHY NOW: RAPID INCREASE IN STUDENTS FROM POVERTY

- 33% increase in Title I Students in last 15 years
- 38% of population in 2001, now making up 51% of the population

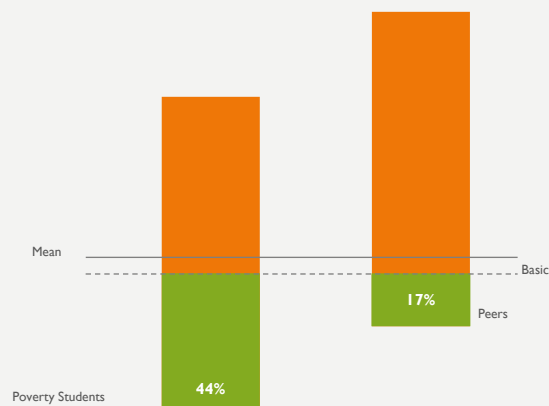


3

WHY NOW: EDUCATION PERFORMANCE STAGNANT SINCE 1965

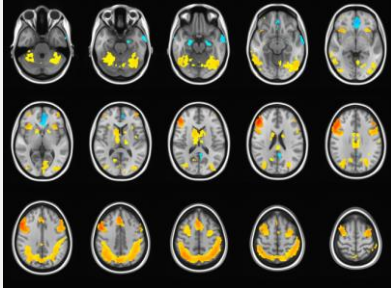
44% of Students from Poverty Below Basic v. Peers at 17%

(This category represents a serious lack of performance. Students demonstrate little or a flawed understanding of the knowledge and skills measured by this assessment, at this grade, in this content area. show what below basic actually is - 2 standard deviations below the mean visually)



4

WHY NOW: NEUROSCIENCE AND TECHNOLOGY BREAKTHROUGHS



Neuroscience and technology breakthroughs enable brain capacity building and research to validate impact



Technology and software breakthroughs enable unprecedented access and scale

5

MISSISSIPPI RANKINGS: POVERTY AND EDUCATION

- Lowest high school graduation rate (77.3%)
- Lowest (51st) in K-12 school performance/student achievement
- One of the highest unemployment rates (6.5%)
- Highest percentage of residents living below the poverty line (24.2%)
- Lowest life expectancy (75 years)
- Lowest state economy: Lowest Gross Domestic Product (GDP) per capita and 49th GDP growth rate

Rankings are from 2014-2015 national data as posted in Mississippi journal 3/28/2016.

STARKVILLE-OKTIBBEHA SCHOOL DISTRICT

STARKVILLE, MISSISSIPPI

HOME OF THE YELLOW JACKETS
AND THE BULLDOGS OF
MISSISSIPPI STATE UNIVERSITY



4 elementary schools
1 large middle school (1200 students)
1 comprehensive, 6A high school
1 alternative and 1 career/tech school

- Highest 25% of students compare academically with those anywhere
- 25% who struggle are among lowest anywhere
- 70% Free-Reduced Lunch

5157 students

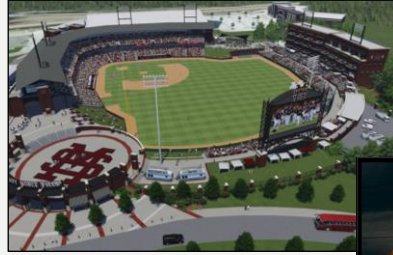
Hispanic 1%	Caucasian 27%
Asian 3%	African American 68%



Designed by TownMapsUSA.com

STARKVILLE-OKTIBBEHA IS KNOWN FOR...

- **Dudy Noble Baseball Field, MSU,** NCAA baseball attendance record
- **Birthplace of tee ball**
- Research and high-tech development in the area of **aviation**
- Local nickname: Stark Vegas
- **Dak Prescott** — record-setting QB for MSU football (Go, Cowboys!)



THE JOURNAL
TRANSFORMING EDUCATION THROUGH TECHNOLOGY

Common Core Admin Tools K-12 Grants Special Needs Professional Development

OPINION RESEARCH REVIEWS RESOURCES TUTORIALS NEWSLETTERS

New Facility Enables Remote Users to Control Robot Swarms Country's Oldest State Virtual School Turns 20

Blended Learning

Mississippi District Named National Reference Site for Use of Blended Learning Tools

By Joshua Bolkan | 01/12/16

The Starkville Oktibbeha Consolidated School District (SOCSD) has been named a National Reference Site by Scientific Learning for its use of the company's Fast ForWord and Reading Assistant blended learning programs.

A first...a landmark event we are now known for...

Starkville was named a **National Reference Site** for Scientific Learning (end of 2014-15).

Context: 703 students who scored in the **lowest quartile in reading** on NWEA's Measures of Academic Progress (MAP) used at least one Fast ForWord product.

Success: Use of Fast ForWord with **55 entering 3rd graders** who scored at a **"beginning reader"** level as soon as they pre-tested. They were predicted to have almost no chance of passing Mississippi's brand new reading assessment/reading gate or being promoted to 4th grade.

By June, 2015, following intensive use of Fast ForWord, **85% of these severely struggling readers passed** the MS 3rd Grade Reading Summative Assessment. **All 55 passed by August** following summer school and more Fast ForWord.

And...in 2015-16, the area became known for another landmark event--

Mississippi's first attempt to **consolidate** a successful school district (Starkville City) with a failing district (Oktibbeha County)



Resulted in creation of the **Starkville-Oktibbeha Consolidated School District**



EDUCATION

Starkville school merger: What went right?

BY RICHARD GRANT JULY 19, 2016

<http://mississippitoday.org/2016/07/19/starkville-school-merger-what-went-right/>



THE HECHINGER REPORT

Covering Innovation & Inequality in Education

TOPICS ABOUT

Mississippi



What happens when two separate and unequal school districts merge?

Forced to consolidate, two school districts in rural Mississippi reimagine desegregation

<http://hechingerreport.org/what-happens-when-two-separate-and-unequal-school-districts-merge/>

During the first year of consolidation (2015-16), the school board and Scientific Learning were committed to providing Fast ForWord to all former Oktibbeha students who needed it, regardless of school location.

West Elementary (formerly West Oktibbeha): success with Fast ForWord:

- Kindergarten reading growth -- top 10 in the state, MS Kindergarten Assessment (2015-16)
- Highest reading gains (1.3 GE) – on Reading Progress Indicator assessment of any school in district (2016-17)

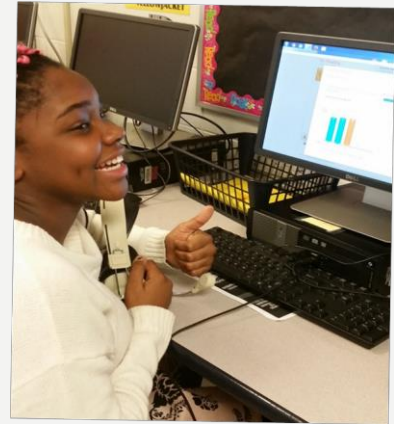
- After 3 years with 3 different state assessments, MS has now adopted Questar with a 10-year contract.
- In our first Questar year (2015-16), our highest district-wide areas on the state accountability model were **Growth of Lowest 25th Percentile students** in math (59.4% of students) and reading (58.9%).
- **Graduation Rate** figures into the accountability model. We have had a steady rise across 4 years of Fast ForWord implementation---now at 81%.



Highlights from first semester 2016-17:

The Mid-Year Lab Coach Meeting

- Of the 650 students that took at least one post RPI, those in the **Struggling proficiency level decreased 46%**, and the students at **Proficient or above increased 89%**.
- Average reading percentile scores increased **15 points** (32nd to 47th percentile).



End of Year Highlights: 2016-17

1.1 GE gain in 59 school days, on average

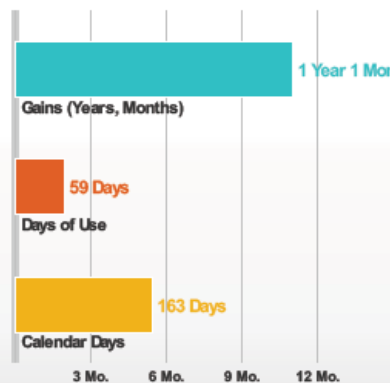
28% of students made 1.5 years gain in reading

Starkville School District

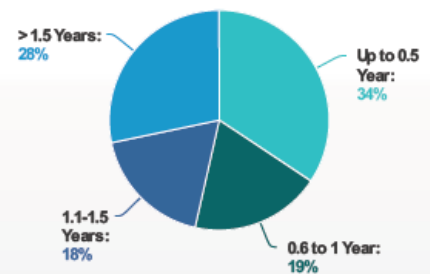
Report Date Range: 08/07/2016 - 05/20/2017
All RPI Assessment

District Gains Report

District Reading Level Gains

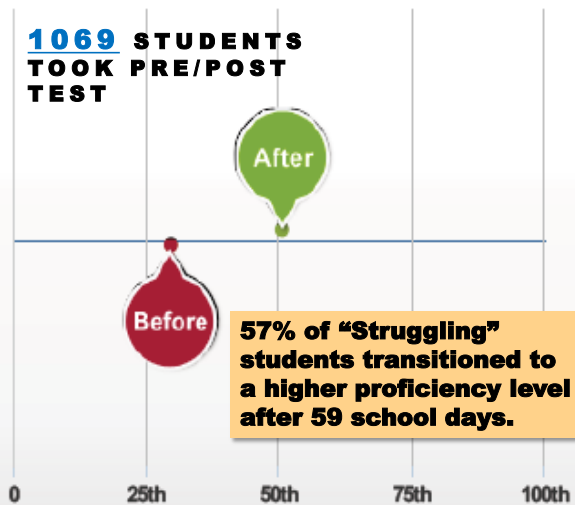


District Reading Level Gain Distribution

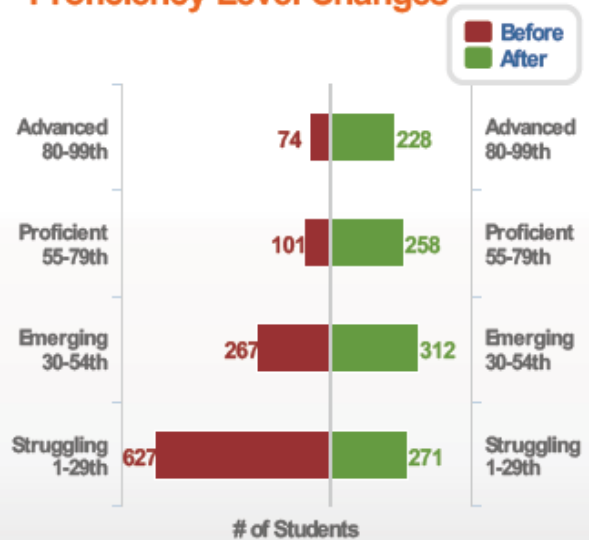


District Reading Percentile Scores

1069 STUDENTS TOOK PRE/POST TEST



District Proficiency Level Changes



Reading Progress Indicator Pre/Post August 2016-May 2017

School	# Students Post Tested	Percentile Gains	# FFW Products Completed	# Days of Use
Overstreet Elementary (5th)	59	13	0.9	75
Starkville High (9th-12th, mostly 9th-10th)	167	13	1.0	63
Armstrong Middle (6-8th)	223	15	1.0	77
Sudduth Elementary (K-1st), 1st gr	44	11	0.5	22
Ward-Stewart Elementary (2nd-4th) mostly 3rd	507	24	1.3	52
West Elementary (K-5th) upper gr	69	37	1.2	58
Totals/Avg	1069	20.10	1.1	59

26% of all students in district participated in Fast ForWord in 2016-17.

21% of all students have pre/post test results

Subject: NWEA MAP improvement: 7th grade Fast ForWord students

Incredible stats for your 7th grade Fast ForWord students on NWEA MAP Reading in Nov/Dec:

- 53 of 64 students (**83%**) made RIT score improvement from fall to winter. That's huge!
- 47 of 64 (73%) have already met "expected (national) growth" for this whole school year
- 30 of 64 (47%, almost half!) made more than 10 points growth (**more than 2 years**)
- **15 students made more than 20 points growth** (5 to 6 is national average)
- **10 students are now scoring on grade level**—some can be considered for FFW exemption when they take their next RPI.

We will be meeting with Interventionist and FFW Coach next week to look at the students of most concern (struggling to show progress on FFW). In the meantime, we will send you a short list of students for whom we think immediate interventions on some FFW exercises are needed.

Kudos to your team; we are so encouraged by the vast improvement most of the 64 students have made so far this year!

Email to Armstrong Middle, Dec. 6, 2016 regarding performance on NWEA MAP (independent measure)



THE FUTURE?



And we hope to soon be known for...

**STARKVILLE
OKTIBBEHA**
SCHOOL DISTRICT

...having the only public middle school in the country located on the campus of and operated as a **partnership** with a major university.



PARTNERSHIP MIDDLE SCHOOL

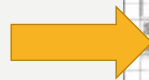
JH ARCHITECTS
& H PLANNERS
INTERIORS
PERKINS+WILL

First floor of 6th and 7th grade school

Opens Spring 2019

- 40 acres donated by MSU (\$5million)
- College of Education suite on 2nd floor; 2 university classrooms
- **Will serve all 800 6th-7th grade students in SOCSD**
- Student access to 13 university museums
- Gives a whole new meaning to "college and career ready!"

Two dedicated Fast ForWord labs, one on each floor/one per grade





Our future looks bright
...The SPARK is ignited....

Thank you, Fast ForWord!

STARKVILLE-OKTIBBEHA
SCHOOL DISTRICT